



FARMHOUSE COLLECTION

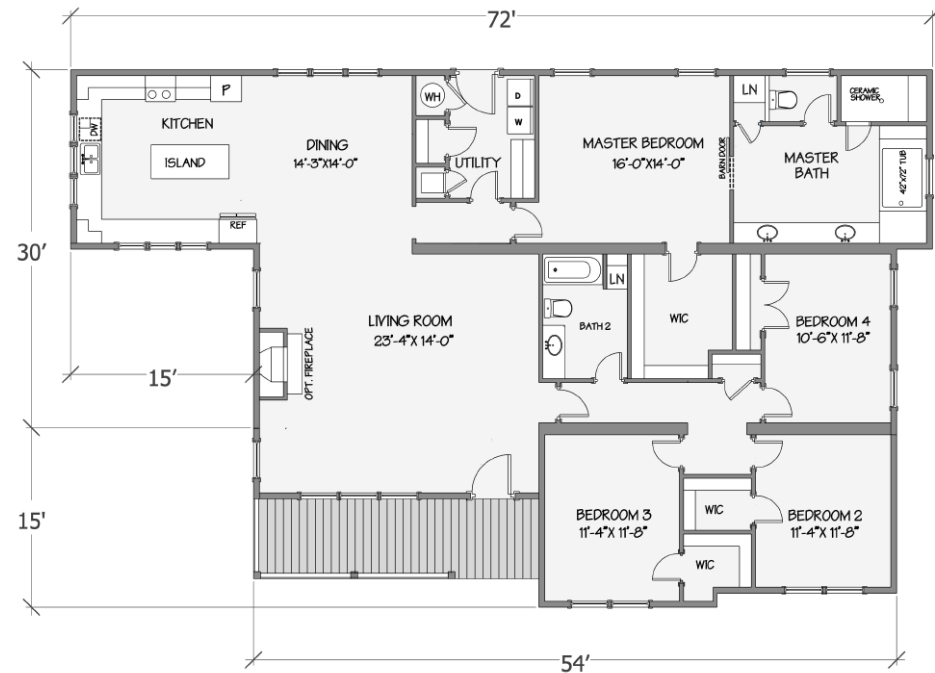
JASMINE / MODEL 5129-76-4-47



3 BEDROOM 2 BATH 2639 TSF / 2477 HSF

STANDARD FEATURES

- 10-Year Limited Structural Warranty
- ½" Smooth Finished Sheetrock Walls Throughout with Eggshell Finish Paint
- 2" Faux Wood Blinds
- High Efficiency 50 Gallon Water Heater
- GFCI Protected Receptacles in Bathrooms, Kitchen and Exterior Receptacles
- Receptacle with USB in Kitchen
- Smoke Detectors in All Bedrooms and Living Areas - Interconnected to Alarm Simultaneously if Any One Alarm Activates
- Exhaust Fan with Light in Baths
- Chandelier in Dining Room
- Recessed Can Ceiling Lights in Kitchen
- Surface-Mount Ceiling Fixtures in All Other Rooms
- Lights Over Bath Lavatories
- Exterior Light at Entrance Doors



OPTIONS AND UPGRADES

- | | | |
|---|---|--|
| <ul style="list-style-type: none"> • 30 Yr. Architectural Shingles • Board and Batten Exterior • 2/2 Black Windows with Grids • Black Metal Handrails • 9' Sidewalls • 8' One Lite Black Entrance Door • ½ Atrium Exterior Door w/Blinds • Ivory Shaker Kitchen Cabinetry w/Ash Island • Granite Kitchen Countertops | <ul style="list-style-type: none"> • Kitchen Ceramic Backsplash • Nickle Pot Filler • SS Farm Sink w/Goose Neck Faucet • Utility Room Mop Sink w/Faucet • Stainless Electric Kitchen Appliances • Nickel Lighting Package • 52" Ceiling Fans in LR and Master BR • Half Stacked Stone Fireplace in LR • 2 Panel White Cordova Interior Doors | <ul style="list-style-type: none"> • Shaw Waterproof Endura Luxury Vinyl Tile Flooring (LR, DR, Kitchen, Hall, Foyer and Baths) • 25 Oz. Carpet in Bedrooms and Closet • Upgrade White Molding Package • Ceramic Shower in Master Bath w/Freestanding Tub • Barn Door at Master bath • Marble Bath Countertops |
|---|---|--|

Franklin reserves the right to change prices and specifications without notice. Some items shown on this illustration are optional upgrades. Does not include approximately 4'-0" length for hitch.

Room dimensions are approximate.



512-842-6700
 info@modularfranklin.com
 2083 State Hwy 71 West | Cedar Creek, TX 78622
 MODULARFRANKLIN.COM